

2019 UK eHealth Start-Up Radar



November 2019



In a world where permanent evolution is the key to success, Wavestone's mission is to enlighten and partner with business leaders in their most critical decisions.



Tier 1 clients,
leaders in their industry



3,000 professionals
across 8 countries



Among the leading independent
consultancies in Europe,
n°1 in France

Paris | London | New York | Hong Kong | Singapore* | Dubai* | São Paulo*
Luxembourg | Madrid* | Milano* | Brussels | Geneva | Casablanca | Istanbul* | Edinburgh
Lyon | Marseille | Nantes

SHAKE UP / : Wavestone's Start-up Accelerator

Conduct **market analysis** in order to create our view of the start-up ecosystem.

Develop start-ups by helping them increase their commercial growth.



What is eHealth?



eHealth is the use of information and communication technologies (ICT) for health



World Health Organization (WHO)



4 main sub-segments



Digital Health Systems

Digital storage of health information and exchange of digitised patient medical records

- / Storage of health information
- / Patient care pathway management
- / Patient scheduling
- / Platform linking patients and healthcare professionals
- / Electronic prescription systems
- / Data protection



Tele-healthcare

Remote exchange of clinical data between a patient and their GP. Support and assistance at a distance

- / E-learning
- / Teleconsultation
- / Telemedicine
- / Remote monitoring
- / Remote support
- / Remote medication management



mHealth

Medical and public health practice supported by mobile devices, patient monitoring devices, personal digital assistants and other wireless devices

- / Personal health app (psychological, genetic diseases, etc.)
- / Wellness mobile app (nutrition, physical activity, etc.)
- / Life environment analysis
- / Wearables devices



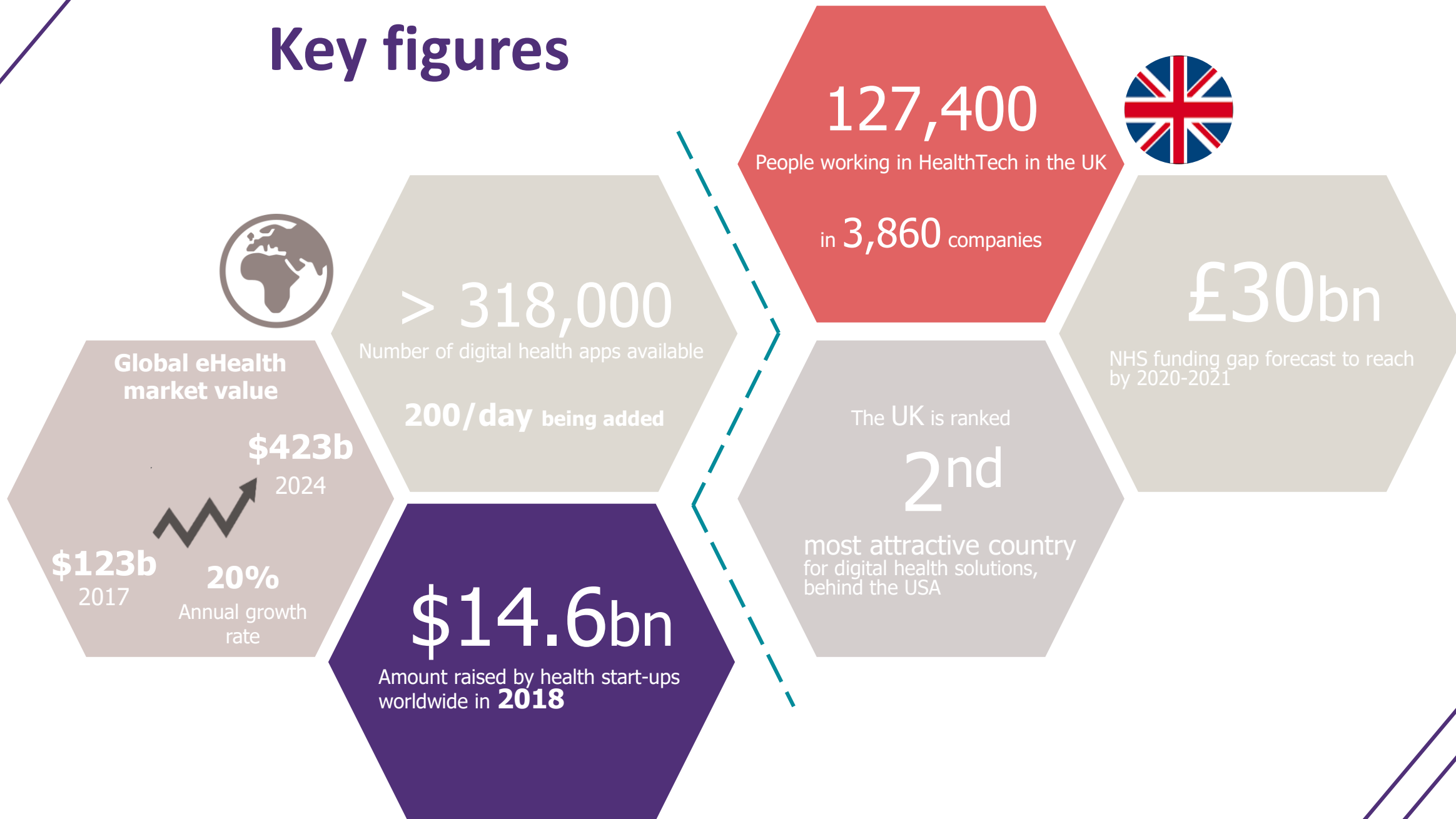
Healthcare Analytics

Software solutions and analytical capabilities needed to assimilate big data

- / Storage and algorithmic processing of massive health data
- / Data analytics
- / Genomics
- / Precision medicine
- / Decision support tool

What does the eHealth market look like?

Key figures



Main market drivers

Health sector context

Shortage of healthcare professionals

A shortage of 15 million health care workers worldwide is expected by 2030



High prevalence of chronic diseases

Remote uses (monitoring, telemedicine, etc.) could be an opportunity to face long term diseases



Increasing government initiatives supporting the use of eHealth solutions

Set up regulations that supervise and promote eHealth solutions (example: reimbursement of digital therapeutics)



Care pathway issues

Shift towards patient-centric healthcare delivery

The Health system operating model is changing



Need to curtail the escalating healthcare costs

eHealth presents new opportunities to reduce costs and increase efficiency



Technological challenges

Rising usage of big data and AI

Health AI market is estimated to increase from \$630M (2014) to \$6.6B (2021)



Growing need to manage regulatory compliance

New eHealth solutions bring concerns about rights to privacy, data protection and cybersecurity concerns



What is the future for eHealth?



Trends

Shift to a patient-centric approach

- > Patients are becoming more engaged in their care pathway

Changes in the health expense management system

- > Outcomes-based care is moving to centre stage

Challenges

Improving the adoption of eHealth solutions at scale

- > Towards healthcare organisations, clinicians and patients

Enabling access to eHealth solutions for all

- > To all social demographics and people around the world



Key Points

There is fierce competition and new contenders

- > Headed by big pharma & web giants companies

The market is booming; it needs control and we need to adapt as it evolves

- > Set up regulations and support key players in the compliance process



How did we build the 2019 UK eHealth Start-Up Radar?

2019 UK eHealth Start-Up Radar: Methodology & Criteria



Our Criteria



Founded in the last
7 years

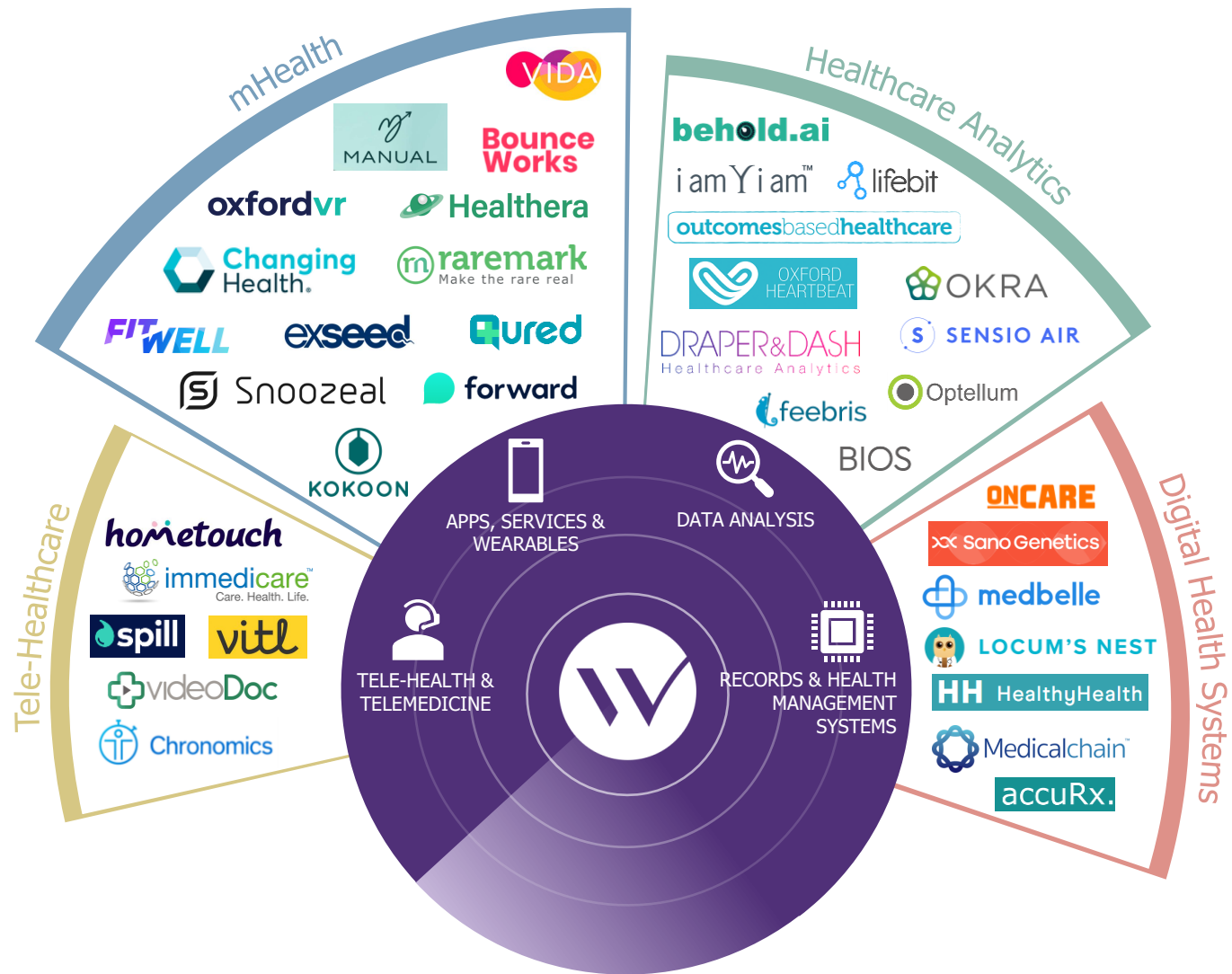


Headquartered
in the **UK**



Less than or equal to
35 employees

The 2019 UK Start-Up Radar



The **2019 UK**
eHealth
START-UP radar
 by **WAVESTONE**

Restricted distribution

© 2019 Wavestone. The eHealth Start-up Radar (layout) is a property of Wavestone. Individual start-up logos are property of their respective owners.

"The golden triangle"

CAMBRIDGE

OXFORD

LONDON

An eHealth Hub

A dense ecosystem with **London** hosting
73% of start-ups



Tele-Healthcare Start-Ups



mHealth Start-Ups

Bounce Works

<https://bounce.works/>

Changing Health.

<https://www.changinghealth.com/>

exseed

<https://www.exseedhealth.com/>

FITWELL

<https://www.fitwell.co/>

forward

<https://forwardhealth.co/>

Healthera

<https://www.healthera.co.uk/>


KOKOON

<https://kokoon.io/>


MANUAL

<https://www.manual.co/>

oxfordvr

<https://ovrhealth.com/>

Qured

<https://qured.com/>

 **raremark**
Make the rare real

<https://raremark.com/>

 **Snoozeal**

<https://snoozeal.com/>

 **VIDA**

<https://vida.co.uk/>

Healthcare Analytics Start-Ups

behold.ai <https://behold.ai/>

 **OKRA** <https://okra.ai/>

BIOS <https://www.bios.health/>

 **Optellum** <http://www.optellum.com/>

DRAPER&DASH
Healthcare Analytics <https://www.draperanddash.com/>

 **outcomesbasedhealthcare** <https://outcomesbasedhealthcare.com/>

 **feebris** <http://feebris.com/>

 **OXFORD HEARTBEAT** <https://www.oxfordheartbeat.com/>

i am Y i am™ <https://www.iamyiam.com/>

 **SENSIO AIR** <https://www.wlab.io/>

 **lifebit** <https://lifebit.ai/>

Digital Health Systems Start-Ups

accuRx.

<https://www accurx.com/>

 Medicalchain™

<https://medicalchain.com/>

HH HealthyHealth

<https://www.healthyhealth.com/>

ONCARE

<https://www.weareoncare.com/>



LOCUM'S NEST

<https://locumsnest.co.uk/>

 Sano Genetics

<https://sanogenetics.com/>

 medbelle

<https://www.medbelle.com/>

PARIS

LONDON

NEW YORK

HONG KONG

SINGAPORE *

DUBAI *

SAO PAULO *

LUXEMBOURG

MADRID *

MILANO *

BRUSSELS

GENEVA

CASABLANCA

ISTANBUL *

* Partnerships

LYON

MARSEILLE

NANTES

WAVESTONE

